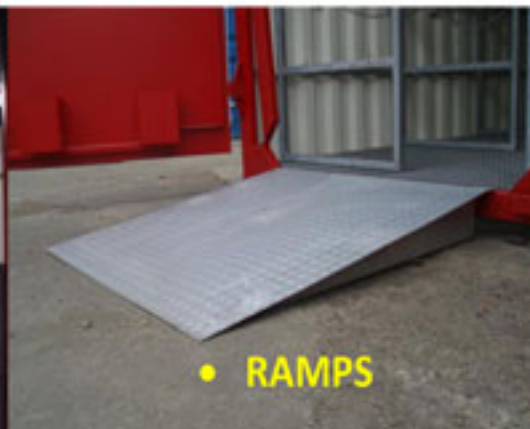


## **COSHH COMPLIANT STORES**

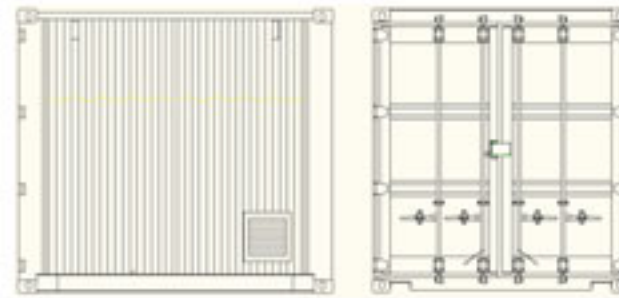
- 
- DRAIN VALVE**
- AVAILABLE IN ANY COLOUR
  - HSE PESTICIDE STORAGE COMPLIANT
  - REMOVABLE GALVANISED GRID DECKING
  - SUB FLOOR BUND (NO STEP)
  - HIGH SECURITY STORAGE
  - HIGH & LOW LEVEL VANDAL PROOF VENTS



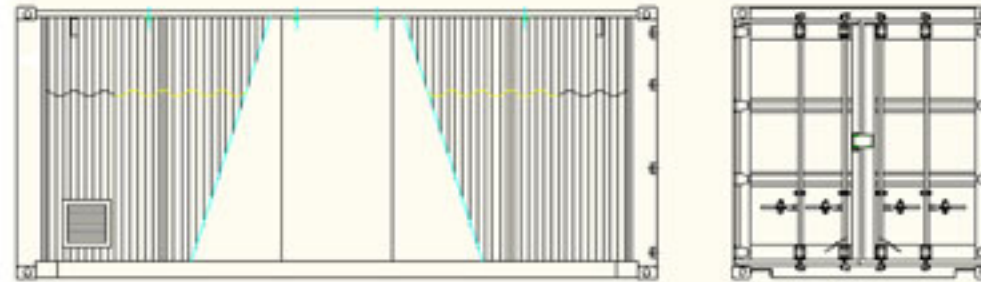


## General Specification

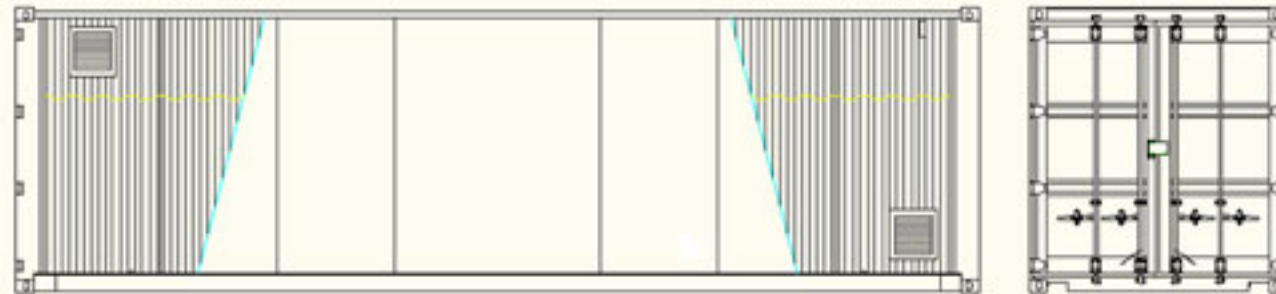
|          |                              |
|----------|------------------------------|
| Shell:   | Full Mild Steel Construction |
| Locking: | Shrouded Hasp & Staple       |
| Decking: | Galv Open Steel Flooring     |
| Finish:  | High Solids Mat Finish       |



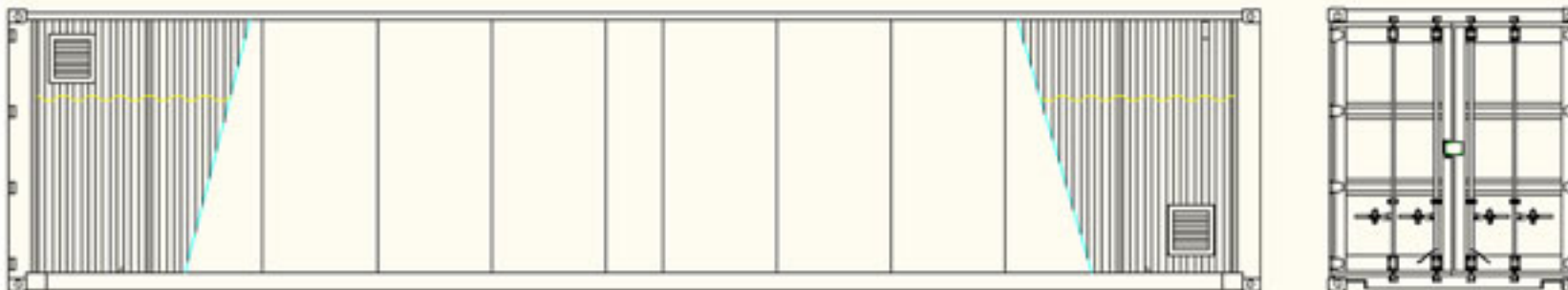
|                 |            |
|-----------------|------------|
| SIZE            | 10ft x 8ft |
| BUND            | OPTIONAL*  |
| CAPACITY        | 675 Litres |
| VENTS (400x400) | 2          |
| DRAIN VALVE     | 1x 3/4BSP  |



|                 |             |
|-----------------|-------------|
| SIZE            | 20ft x 8ft  |
| BUND            | OPTIONAL*   |
| CAPACITY        | 1350 Litres |
| VENTS (400x400) | 2           |
| DRAIN VALVE     | 1x 3/4BSP   |



|                 |             |
|-----------------|-------------|
| SIZE            | 30ft x 8ft  |
| BUND            | OPTIONAL*   |
| CAPACITY        | 2025 Litres |
| VENTS (400x400) | 4           |
| DRAIN VALVE     | 1x 3/4BSP   |

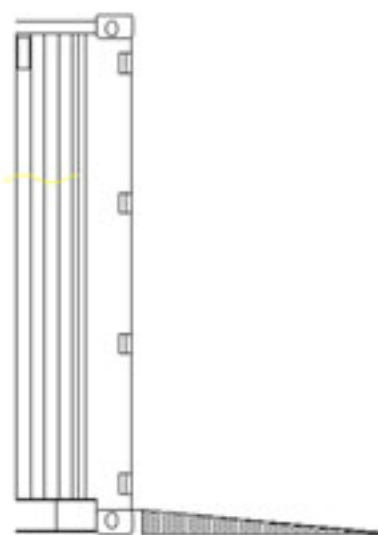


|                |             |
|----------------|-------------|
| SIZE           | 40ft x 8ft  |
| BUND           | OPTIONAL*   |
| CAPACITY       | 2700 Litres |
| VENT (400x400) | 4           |
| DRAIN VALVE    | 2x 3/4BSP   |

\*OPTIONAL BUND can be added to increase storage capacity of any size unit if required

## RAMP SPECIFICATION

| MAX LOAD | WIDTH | LENGTH APRX | (Min) RAMP GRADIENT | PRICE  |
|----------|-------|-------------|---------------------|--------|
| 250KG    | 1220  | 1350        | 1:8                 | P.O.A. |
| 1000KG   | 2440  | 2500        | 1:16                | P.O.A. |
| 3500KG   | 2400  | 2500        | 1:16                | P.O.A. |
| 5000KG   | 2400  | 2500        | 1:16                | P.O.A. |

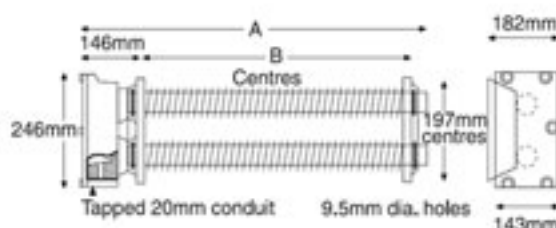
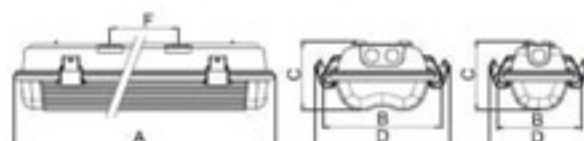


## ELECTRICAL ACCESSORIES

| ZONE 2 LIGHTING |        |       | ZONE 2 HEATING       |          |        |
|-----------------|--------|-------|----------------------|----------|--------|
|                 |        |       | FITTED WITH LIGHTING |          |        |
|                 | LIGHTS | PRICE | HEATERS              | TOTAL kW | PRICE  |
| 10X8            | 1      | 550   | 1                    | 2        | P.O.A. |
| 20X8            | 2      | 750   | 2                    | 3        | P.O.A. |
| 30X8            | 3      | 950   | 2                    | 4        | P.O.A. |
| 40X8            | 4      | 1150  | 3                    | 4.5      | P.O.A. |

**Stand Alone heating Additional cost of £TBC (to be added to heating prices above)**

F - spacing of self-locking fastening springs



## Heating Element Specification

### DEFINITIONS

**EEx** – Electrical Apparatus for potentially explosive atmospheres.

**d** – Flameproof enclosure 'd' (EN50018:2000)

**IIB** – For industries other than mines where explosive atmospheres caused by gases, and vapour are likely to occur, and where the source of the explosive atmosphere is covered by classification "B".

**T2** – Ignition temperature >300 deg°C  
The surface temperature of any equipment installed must be below the lowest ignition temperature of the explosive gas/gases or vapour mixture present.

**II 2 G** – Non-mining applications, Group II, Category 2 for use in gas/vapour/mist atmosphere.

### APPROVALS

In accordance with ATEX Directive 94/9/EC: 1994

BS EN 50014: 1998

BS EN 50018: 2000

BASEEFA Certificate Nos.

03ATEX0431 – Single tier

03ATEX0432 – Double tier

### TYPE OF PROTECTION

II 2 G EEx d IIB T2

### IP RATING

IP44

### CABLE ENTRY

Single 20mm tapped entry as standard.